

# FORMPLY



Overlaid Formwork  
Panels



# IPL Formply for strong, stable, concrete formwork

IPL FORMPLY is manufactured for use in the concrete forming industry to provide strong, stiff, lightweight support for the forming of concrete structures. It can also be used where any other hardwearing surface is required.

- ☐ IPL FORMPLY is the only manufactured concrete forming plywood made in New Zealand.
- ☐ IPL FORMPLY has been manufactured at our plant in Greymouth, for in excess of 30 years and has been used successfully in Asia, Australia and New Zealand.
- ☐ IPL FORMPLY is overlaid with high quality, heavy duty phenolic resin impregnated papers which provide a hard wearing surface making it suitable not only for concrete shuttering but also for truck and ute decks, shelves and any wooden surface which is subject to high wear. In addition, the phenolic overlay paper protects the surface veneer from excessive moisture uptake which assists to minimize hydration staining and grain raising.
- ☐ IPL FORMPLY resists dilute acids and alkalines which increases the number of uses that is obtained when used with concrete.
- ☐ IPL FORMPLY surface is very smooth which transmits into the finish of the concrete.
- ☐ IPL FORMPLY is made in New Zealand from renewable plantation grown Pinus Radiata veneers.



## Usage and Maintenance

- ☐ Place long edge of sheets across the supports.
- ☐ Allow 2-3mm expansion gap on all sheet edges and if required use some form of elastic sealer to fill gap - the gap may have to be widened to allow for the gap filler.
- ☐ When nailing or screwing the sheets it is essential to fix to avoid movement. When counter sinking the fixings through the overlay paper it will be necessary to fill these with epoxy filler and smooth off to give good finish and limit moisture uptake.
- ☐ To avoid staining from fasteners use hot-dipped galvanised, stainless or alloy fasteners.
- ☐ Cut edges should be resealed using acrylic paint which helps keep moisture out and minimises distortion that can be caused by expansion around sheet perimeters. The factory's cut edges are coated with a water-repellent coating. The veneers are bonded with marine type glue, which ensures they will not separate under wet conditions.
- ☐ Use release agent before use and reuse to ensure clean release from concrete and to minimise hydration staining and grain raising.
- ☐ Take care to avoid vibrator contact as much as possible to keep face intact and in so doing extend the life, to give repetitive service.
- ☐ When storing sheets, where possible, lay flat with support of bearers.





## Design and Installation

Spacings for framing supports depend on the properties that pertain to the sheets construction and direction of the face veneer (table1). These values are used in conjunction with standard engineering standards to design the form to withstand the pressure developed by the wet concrete and how much deflection is allowable.

The actual thicknesses of our sheets are 12.5mm and 17.5mm but the 12mm and 17mm values in the tables can be attributed to our sheets.

**Table 1. Identification, section properties (per mm width) for the two thicknesses of standard IPL FORMPLY**

ID Code	Thickness mm	Parallel to face grain	Parallel to face grain	Perpendicular to face grain	Perpendicular to face grain
		Moment of Inertia I (mm <sup>4</sup> /mm)	Section Modulus Z (mm <sup>3</sup> /mm)	Moment of Inertia I (mm <sup>3</sup> /mm)	Section Modulus Z (mm <sup>3</sup> /mm)
12-15-5	12	80	14.5	60	13.0
17-15-7	17	220	25.5	190	26.5

**Table 2. Allowable pressures for IPL FORMPLY supported over three spans to give up to an F5 finish as per NZ 3114;1987 "Specification for concrete surfaces finishes"**

Thickness	12mm	17mm
ID Code	12-15-5	17-15-7
Frame Centres mm	Concrete pressure (kPa) for deflection limited to lesser of span/270 or 3mm	Same
Face grain across supports		
225	48.2	115.2
300	20.3	46.7
400	8.6	19.7
450	6.0	13.8
480	5.0	11.4
600	2.5	5.8
Face grain parallel to supports		
225	29.8	108.0
300	12.6	48.2
400	5.3	20.3

# FORMPLY



# FORMPLY

## Specifications

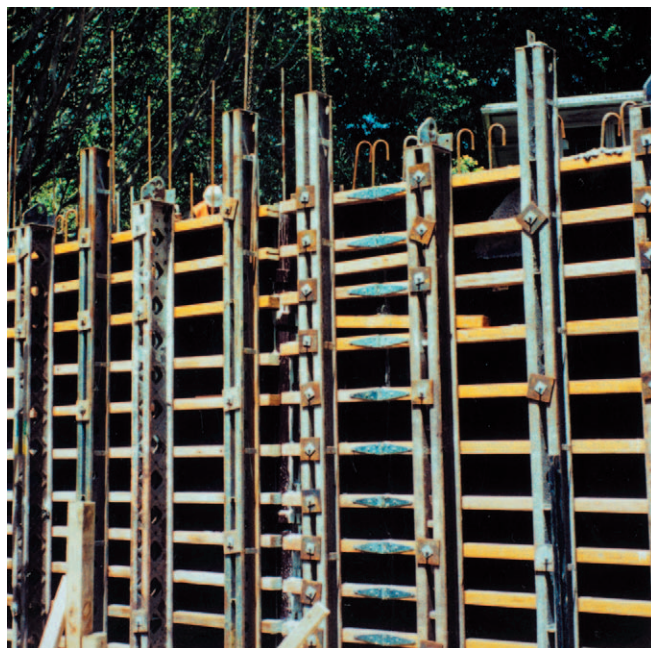
Sheet size: 2.400 x 1.200  
2.440 x 1.220 (on request)  
Tolerance  $\pm 1.5\text{mm}$

Thickness: 12.5mm and 17.5mm  
Tolerance  $\pm 3\%$   
(other thicknesses are available on request)

Glue Type: Type A Phenol formaldehyde (marine)

Stress Grade: **F14**

Standards: Made to AS/NZ 2269 -  
Structural Plywood and AS6669



## Quality Assurance

IPL FORMPLY is made to the highest quality levels based on the requirements of the Australian/New Zealand standard 2269 and AS6669 in conjunction with the Engineered Wood Products Association of Australasia.



INTERNATIONAL PANEL & LUMBER (WEST COAST) LTD  
3 Trickies Road, Greymouth, New Zealand, PO Box 179  
Telephone 03-762 6759, Facsimile 03-762 6789,  
Freephone 0800 650 801, Freefax 0800 650 802, Email [sales@tuffply.co.nz](mailto:sales@tuffply.co.nz)  
Website [www.iplplywood.co.nz](http://www.iplplywood.co.nz)